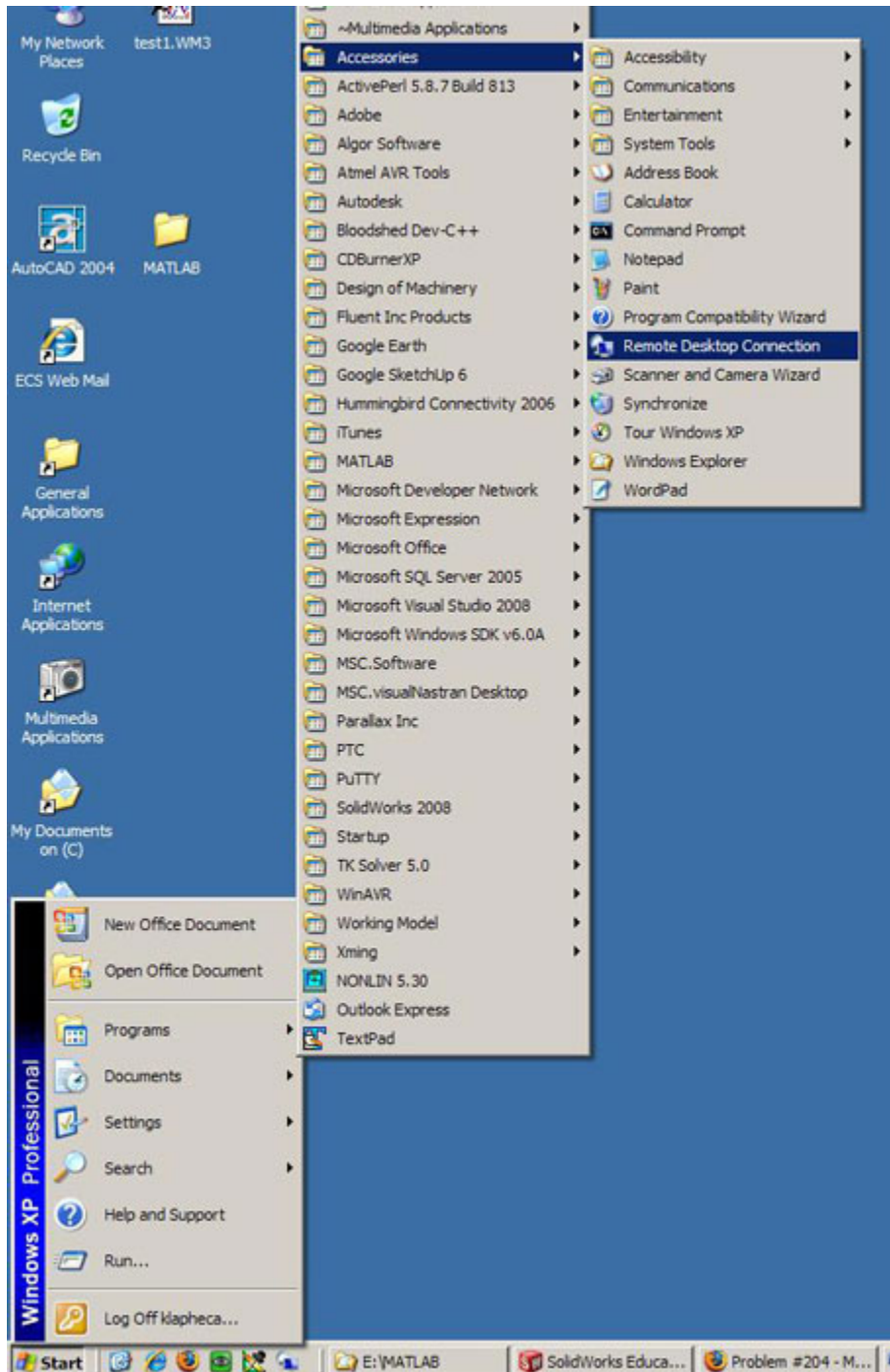


## Accessing an older version of MATLAB

1. Place the files you want to open up in MATLAB in the *My Home Space on Gaia* folder.
2. Open up the *Remote Desktop Connection*. Make the following selections: *Start, Programs, Accessories, Remote Desktop Connection*.



3. Enter `wotan.ecs.csus.edu` into the *Computer* field, then hit *Connect*.



4. You will then be prompted to give your user name and password. (The same one used to log into any of the ecs computers).
5. Once the Remote Desktop is up and running then copy the MATLAB files from the *Home Space on Gaia* folder and paste them on the desktop or other convenient location.
6. Finally open up MATLAB and place your MATLAB files in the working directory. You are done.